

# 9390, 9393

Brass Automatic Air Vent



Via Circonvallazione, 10  
13018 Valduggia (VC), Italy  
Tel: +39 0163 47891  
Fax: +39 0163 47895  
www.vironline.com



Brass automatic air vent  
Threaded M (ISO 228/1)  
TR CU 010 compliant (Fig. 9390)  
WRAS compliant (Fig. 9393)

Available in the following versions:

- Fig. 9390, automatic air vent
- Fig. 9393, automatic air vent with check valve (1/2")

PN10

Free of CE marking (cat. according to Art. 4.3 Dir. 2014/68/EU)

Working conditions

- Suitable for: water, 0°C to +110°C  
over 100°C only for water with added anti-boiling fluids
- Not suitable for: gases group 1 & 2, liquids group 1 (Dir. 2014/68/UE)

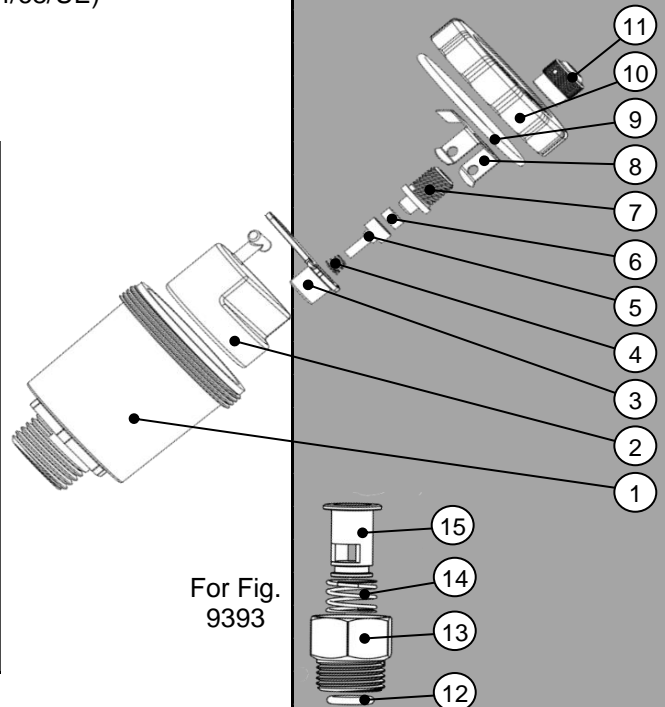


## PARTLIST

N.	Part	Material	Norm
1	Body	Brass	EN12165 CW617N
2	Floating	Polypropylene <sup>1</sup>	-
3	Cursor	Plastic	-
4	Spring	Stainless steel	AISI 304
5	Shutter	Plastic	-
6	Shutter gasket	EPDM Perox	-
7	Vent	Brass	EN12164 CW617N
8	Cursor mount	Stainless steel	AISI 304
9	O-ring	EPDM Perox	-
10	Plug	Brass	EN12165 CW617N
11	Vent plug	Polypropylene <sup>1</sup>	-
12	O-ring <sup>2</sup>	EPDM Perox	-
13	Check valve body <sup>2</sup>	Brass	EN12164 CW617N
14	Check valve spring <sup>2</sup>	Stainless steel	AISI 302
15	Shutter <sup>2</sup>	Brass	EN12164 CW617N

<sup>1</sup>for high temperature

<sup>2</sup>Check valve Fig.9393 components

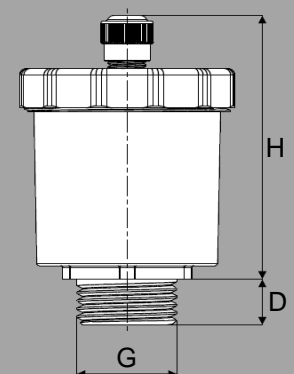
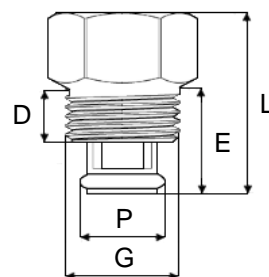


## DIMENSIONS

DN	G	D [mm]	H [mm]	P <sup>1</sup> [mm]	E <sup>1</sup> [mm]	L <sup>1</sup> [mm]	Weight <sup>2</sup> [g]
010	3/8"	10,5	60	-	-	-	156
015	1/2"	10,5	60	15,5	20,8	35,3	165 / 213

<sup>1</sup>only for Fig. 9393

<sup>2</sup>Fig. 9390 / Fig. 9393



230626